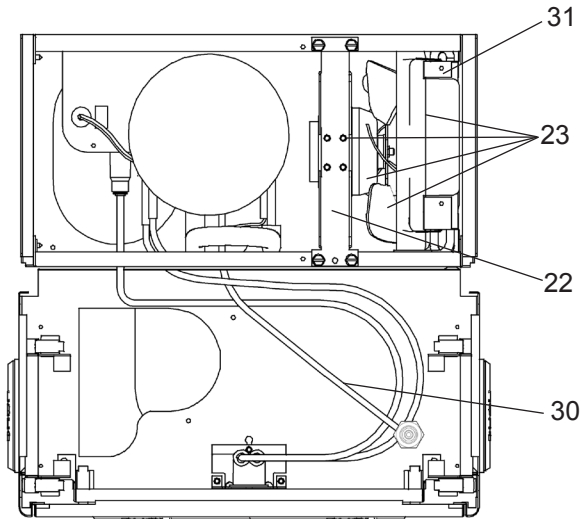


Halsey Taylor® OWNERS MANUAL

Backsplash Model Water Coolers

USES HFC-134A REFRIGERANT





See Fig. 3 (on Page 3)
For Push Bar Mechanism

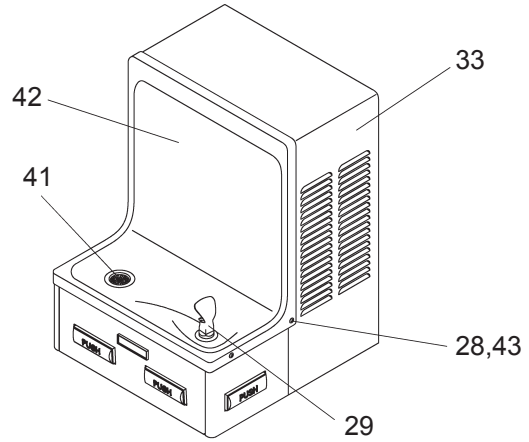
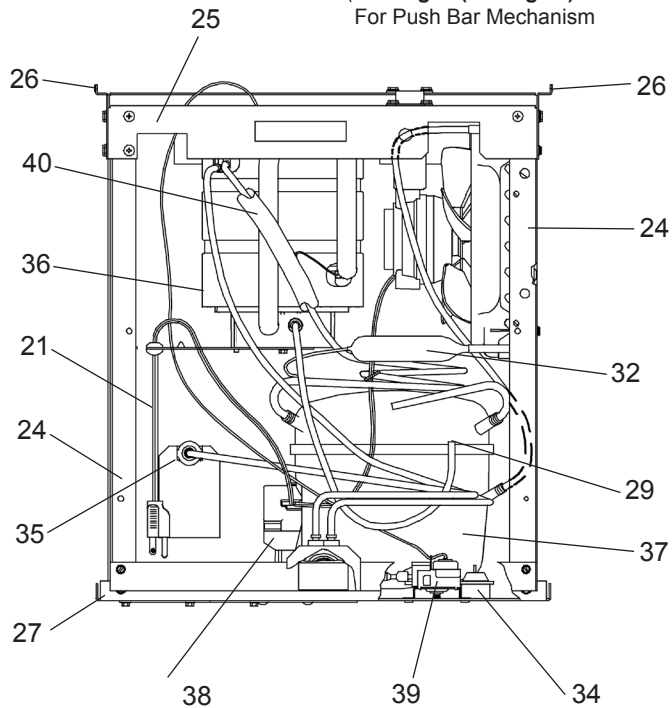


FIG. 1

NOTE: Non-refrigerated units do not include all electrical and refrigeration components shown above. Other components and rough-in are the same as shown.

PUSH BAR MECHANISM

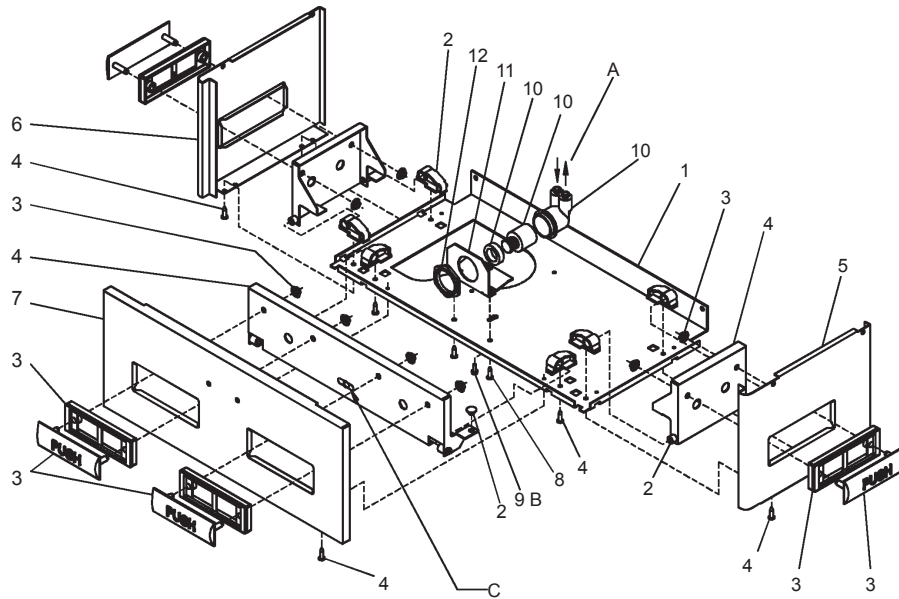


FIG. 3

Water Valve Mechanism - ADJUSTMENT PROCEDURE:

- Turn adjustment screw (Item 9) "Counter-Clockwise" until water flow from bubbler starts.
 - Turn adjustment screw "Clockwise" until water flow stops, THEN turn an additional 1/2 turn.
- NOTE:** Adjustments stated above are viewed from underneath unit (bottom side of dispenser panel Item 1)
- NOTE:** If continuous flow occurs at the end of the compressor cycle, turn cold control (Item 46) counterclockwise 1/4 turn.

LEGEND

- A) Note: Water flow direction
- B) Adjust this screw to eliminate mechanism "Free Play" or continuous flow from bubbler conditions. (See ADJUSTMENT PROCEDURE)
- C) Stream height adjustment (see note #8)

HANGER BRACKETS & TRAP INSTALLATION

- 1) Remove hanger bracket fastened to back of cooler by removing one (1) screw.
 - 2) Mount the hanger bracket and trap as shown in Figure 2.
- NOTE:** Hanger Bracket **MUST** be supported securely. Add fixture support carrier if wall will not provide adequate support.
- IMPORTANT:**
- 5-1/2 in. (140mm) dimension from centerline of unit to centerline of trap must be maintained for proper fit.
 - Anchor hanger securely to wall using all mounting holes.
- 3) Install straight valve for 3/8" O.D. unplated copper tube.

INSTALLATION OF COOLER

- 4) Hang the cooler on the hanger bracket. Be certain the hanger bracket is engaged properly in the slots on the cooler back as shown in Figure 2.
- 5) Loosen the two (2) screws holding the lower front panel at the bottom of cooler base and two (2) screws at the top. Remove the front panel and set aside.
- 6) Connect water inlet line--See Note 4 of General Instructions.
- 7) Remove the slip nut and gasket from the trap and install them on the cooler waste line making sure that the end of the waste line fits into the trap. Assemble the slip nut and gasket to the trap and tighten securely.

START UP

Also See General Instructions

- 8) Stream height is factory set at 35 PSI. If supply pressure varies greatly from this, adjust screw, accessible by removing front panel (Item 7, Fig. 3). CW adjustment will raise stream and CCW adjustment will lower stream. For best adjustment, stream should hit basin approximately 6-1/2" (165mm) from bubbler.
- 9) Replace the front panel and secure by retightening four (4) screws.

ITEM NO.	PART NO.	DESCRIPTION
1	26588C	Panel - Bottom Dispenser
2	98537C	Kit - Push Bar/Pivot Blocks/Bumpers/Rivets
3	98895C	Kit - Pushbars (Front & Sides)/Inserts/Nuts
4	98789C	Kit - Front/Side Pushbar Bracket/Screws
5	See Color Table	Panel - Right Side
6	See Color Table	Panel - Left Side
7	See Color Table	Panel - Front Push
8	75502C	Screw - Regulator Brkt. Mtg.
9	70935C	Screw - Shoulder x 1/2" Lg.
10	98531C	Kit - Regulator/Holder/Nut
11	23003C	Bracket - Regulator Mounting
12	40045C	Hex Nut

COLOR TABLE

PANEL COLOR	Item No. 5 Part No. (w/o hole)	Item No. 5 Part No. (with hole)	Item No. 6 Part No. (w/o hole)	Item No. 6 Part No. (with hole)	Item No. 7 Part No.
Platinum Vinyl	26644C	26659C	26614C	26629C	26599C
Stainless Steel	26637C	26652C	26607C	26622C	26600C
Almond Vinyl	26636C	26651C	26606C	26621C	26601C
Slate Vinyl	26646C	26661C	26616C	26631C	26602C

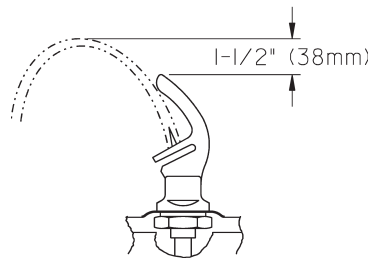
115V PARTS LIST

ITEM NO.	PART NO.	DESCRIPTION
21	36208C	Power Cord
22	27095C	Fan Bracket
23	98775C	Kit - Fan Motor Assy/Blade/Shroud/Nut/Screws
24	27093C	Angle - Bracket Corner
25	27094C	Bracket - Front Support
26	28797C	Bracket - Basin Mounting
27	27097C	Frame - Back/Bottom
28	70142C	Clip (Front and Rear Panels)
29	98533C	Kit - Bubbler Chrome (Bubbler/Nipple/Gaskets)
30	56092C	Tubing - Poly (Cut to Length)
31	98776C	Kit - Condenser/Drier
32	66703C	Drier
33	26680C	Wrapper - Platinum Vinyl
	26682C	Wrapper - Slate Vinyl
	22707C	Wrapper - Almond Vinyl
	22708C	Wrapper - Stainless Steel
34	0000000252	Kit - Compr Mtg (Grommets/Cotter Pin/Washers)
35	55996C	Strainer
36	98724C	Kit - Evaporator Replacement Assembly
*37	36322C	Compressor Serv. Pak
38	0000000238	Kit - Electrical (Relay/Cvr/Overload)
39	98773C	Kit - Cold Control/Screws
40	98778C	Kit - Heat Exchanger/Drier
41	98790C	Kit - Drain (Tailpipe/Strainer/Ferrule/Gasket)
42	26664C	Basin - Stainless Steel
43	75536C	Screw - Basin Mtg.

230V-50Hz PARTS LIST

21	35827C	Power Cord
25	31430C	Fan Motor
*37	1000002147	Compressor Serv. Pak
38	98751C	Kit - Electrical (Relay/Cvr/Overload)
-	35826C	Power - Inlet

*INCLUDES RELAY & OVERLOAD. IF UNDER WARRANTY, REPLACE WITH SAME COMPRESSOR USED IN ORIGINAL ASSEMBLY.
 NOTE: All correspondence pertaining to any of the above water coolers or orders for repair parts MUST include Model No. and Serial No. of cooler, name and part number of replacement part.



CORRECT STREAM HEIGHT

FIG. 4

Halsey Taylor®

2222 CAMDEN COURT
 OAK BROOK, IL 60523
 630.574.3500

PRINTED IN U.S.A.

FOR PARTS, CONTACT YOUR LOCAL DISTRIBUTOR OR VISIT OUR WEBSITE WWW.HALSEYTAYLOR.COM